

# BASIC NEEDS PROGRAMS & SERVICES

---

## Foundational Equity at SRJC: *Building a Community of Care*

---

*Robert Ethington*  
Sr. Dean of Students  
Board of Trustees  
Presentation  
December 16, 2025



# AGEND



01 WHY & WHAT?

---

02 FOOD

---

03 HOUSING

---

04 TRANSPORTATION

---

05 MENTAL HEALTH

---

06 WHAT'S AHEAD

# WHY BASIC NEEDS?

- Basic Needs is Core to our Mission & Values
- Strategic Plan Initiative: Student Success & Support
- Housing and Food Insecurity Data
- Lack of Basic Needs as Barriers to Student Success



# WHAT ARE BASIC NEEDS?

- Belonging & Purpose
- Holistic Health & Wellness
- Food
- Housing
- Transportation
- Mental Health
- Technology
- Childcare



# REAL COLLEGE CALIFORNIA SURVEY

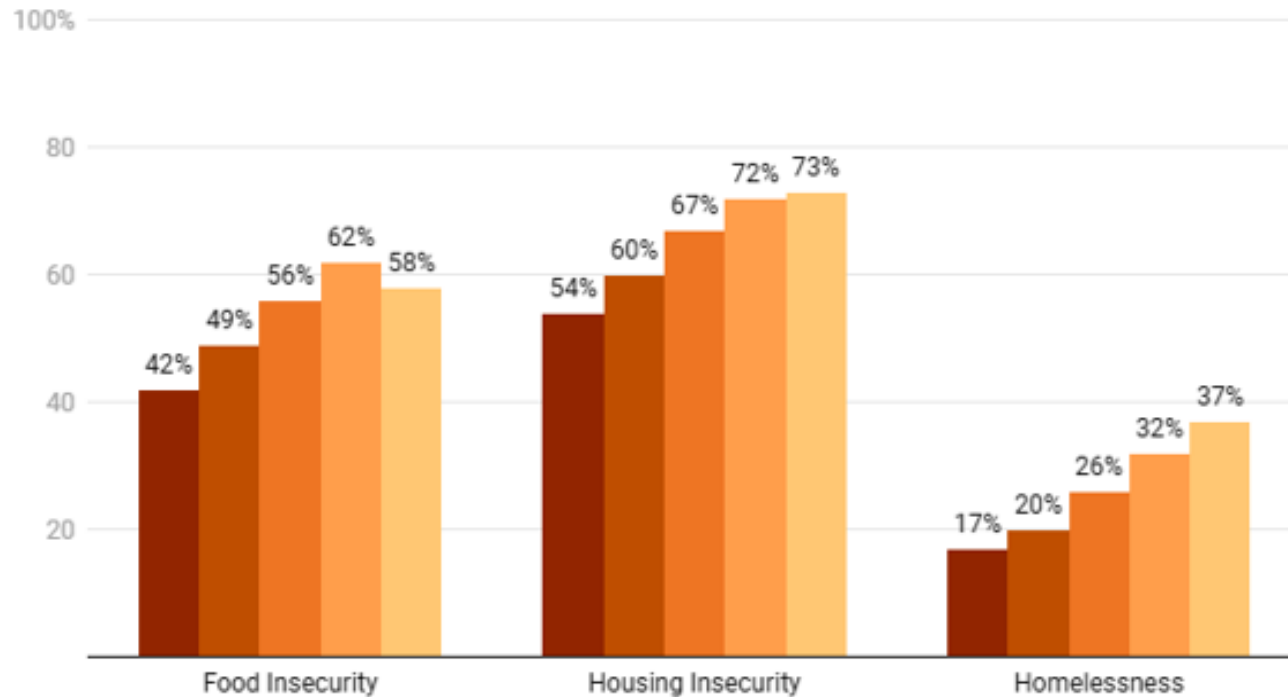
- 67% Basic Needs Insecurity
- 46% Food Insecurity
- 58% Housing Insecurity
- 20% Experienced Homelessness in Past Year
- BN Insecurity Tied to Poor Academic Performance

*From RP Group and CCLC Task Force, 2025 Real College CA Study*

## Basic Needs Insecurity Tied to Students' Academics

A survey of California community college students shows students failing their courses are more likely to report lacking food or housing.

■ A's ■ B's ■ C's ■ D's or F's ■ W's



Note: Data includes 76,000 responses from students at 102 colleges in the California Community College system.

Chart: Inside Higher Ed • Source: 2025 Real College CA Survey • Created with [Datawrapper](#)



*"You've given me all the support in one month that I've ever received from anyone in my entire life."*  
- SRJC Student

# FOOD DISTRIBUTION, 24 -25

- Santa Rosa: *Cultural Centers / Food Pantry / Polly Hall*
- Roseland: *Food Distribution/Snack Pantry*
- Petaluma: *Welcome & Connect Center*
- Shone Farm & PSTC: *Food Pantries/Staff Support*
- Everywhere: *Clubs & Others*

Funds Spent	Total Contacts	Undup Students
~\$300,000	7,643	3,375



# HOMELESS & HOUSING INSECURE PROGRAM, 24 -25

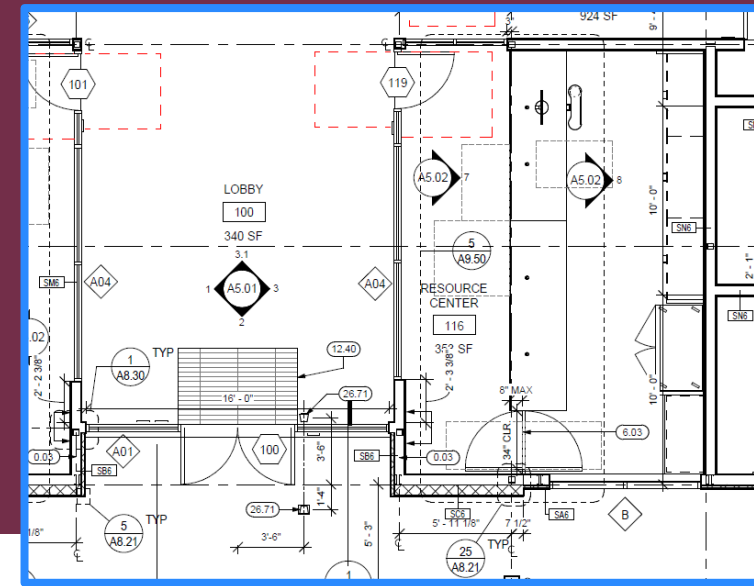
- 2024 -25 District Basic Needs Cases: 814 (778 Undup students)
- District-Wide student support for housing: ~ \$845,000
- Supported 80 Students with HHIP Funds
- Individual & Family Support Network (IFSN)
- Basic Needs Reports
- [socialwork@santarosa.edu](mailto:socialwork@santarosa.edu)

*"I feel blessed, you have treated me with respect and compassion, something I have not received from other places."*  
- SRJC Student



# SRJC ROSELAND SNAPSHOT

- Amount Spent in Food: **\$11,100**
- Rapid Rehousing Program with HHIP Budget: **7 Students**
- One -Time Assistance with HHIP Budget: **6 Students**
- Other BN Services Maxient Report: **29 Students**
- Food Distribution: **370 Students** (April 3 – June 30, 2025)
- Snack Pantry: **574 Students**



# POLLY O'MEARA DOYLE HALL UPDATE

- 95% Occupancy (since Aug, '25)
- >40% Housing Insecure
- State Model for Case Management
- SB169 / Doyle Scholarship
- Redwood Empire Food Bank Deliveries
- Provide >10 Free Dinners Per Year



# STUDENT TRANSPORTATION

SRJC Shone Farm Uber Voucher Pilot Program	1st Semester (Fall 25)	26 students
SRJC Student Discount SMART 31-Day Pass Program	2nd Year	158 Students
"Any Line, Any time" SR CityBus , SoCo Transit, Petaluma Transit	8th Year	~32K rides per quarter



# B:CARE & MENTAL HEALTH, 24 -25

TOTAL  
REPORTS

221

TOTAL  
CASES

191

UNDUP  
STUDENTS

170

Total Therapy  
Sessions

2,516

Unduplicated  
Students

557

Outreach &  
Education  
Sessions

1,061

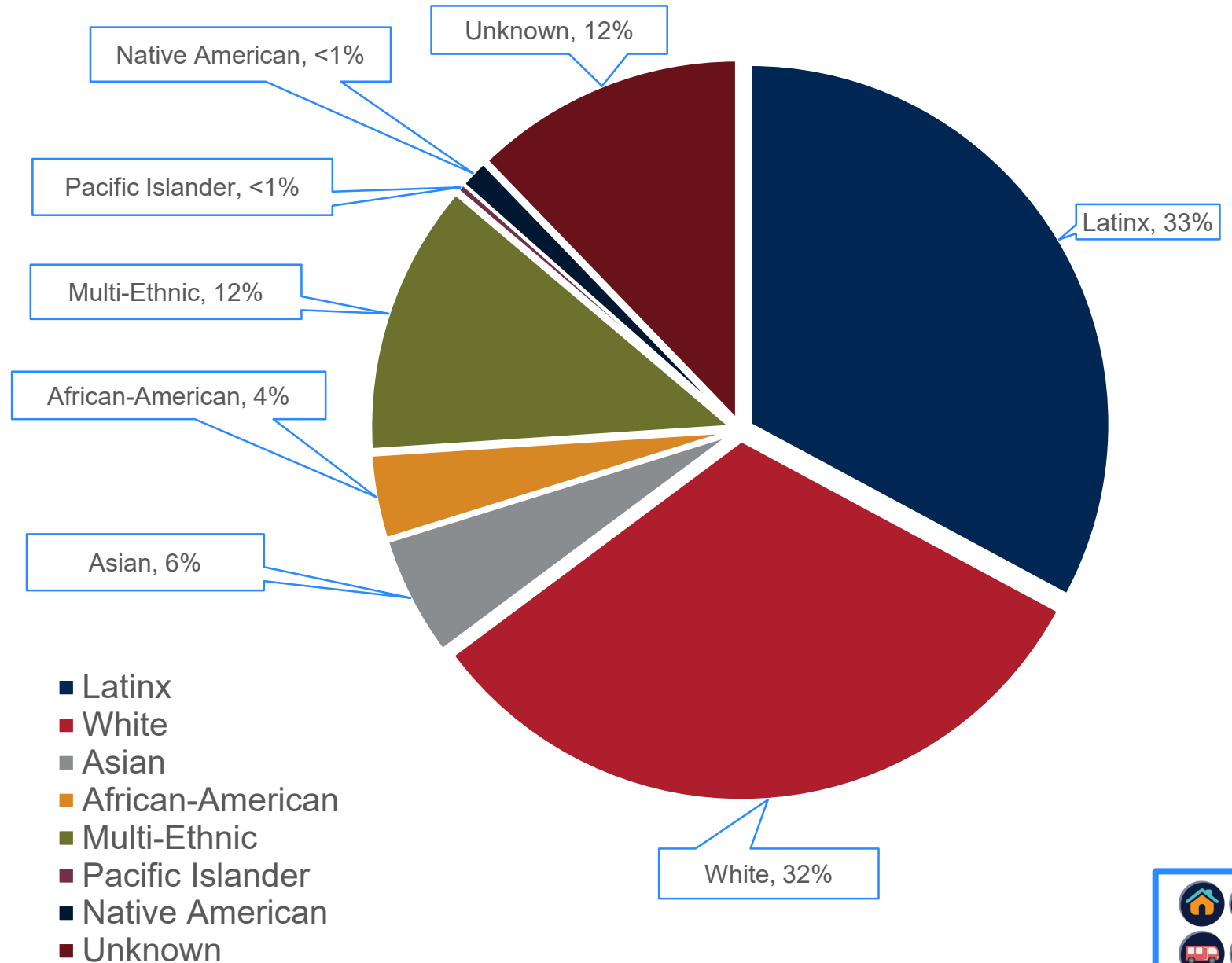
*"You've done more for me than  
anyone else in such a short time, and  
I'm so grateful for that, and I won't let  
you down."*

*- SRJC Student*



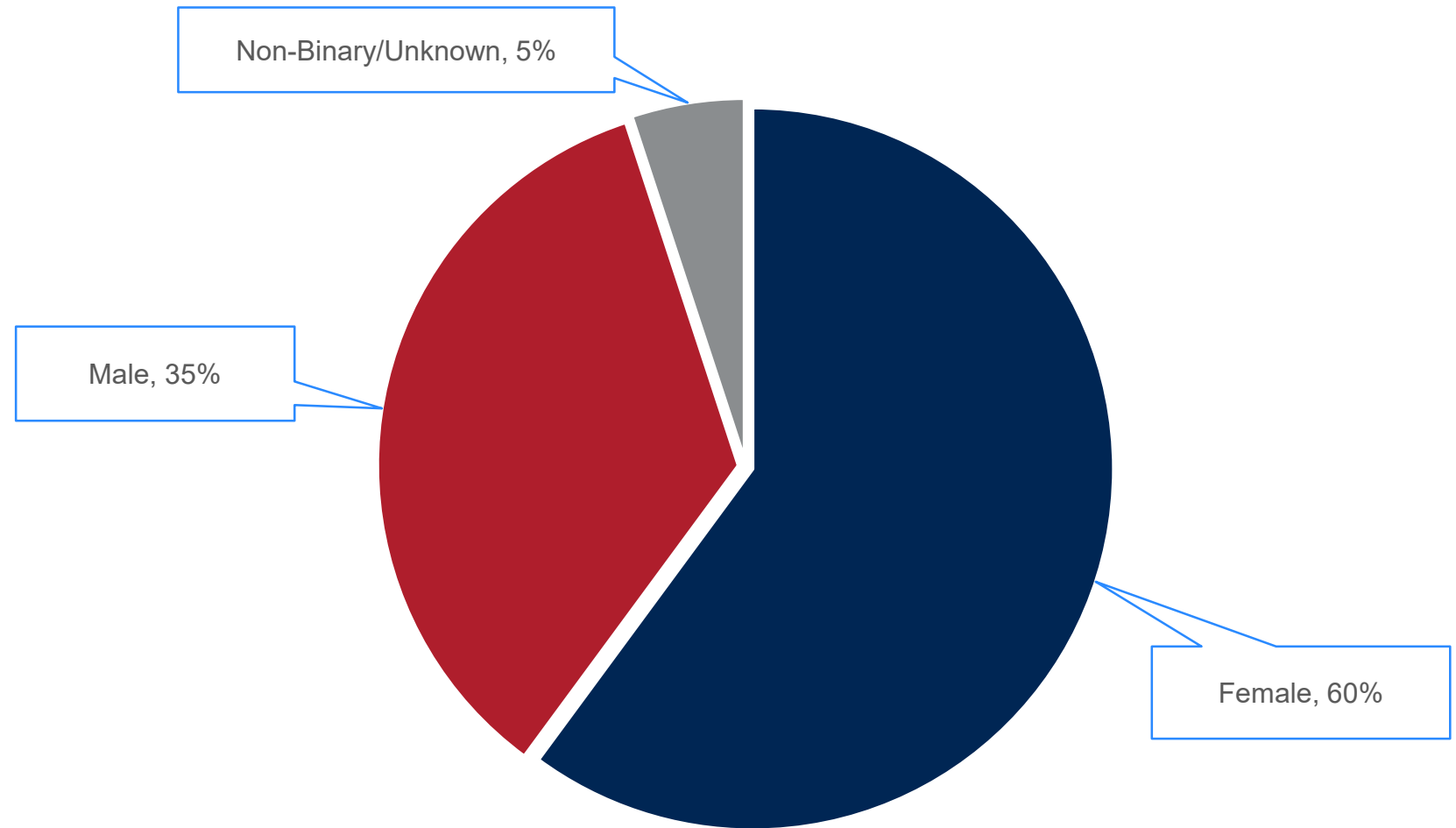
# STUDENTS RECEIVING THERAPY BY RACE

---



# STUDENTS RECEIVING THERAPY BY GENDER

---

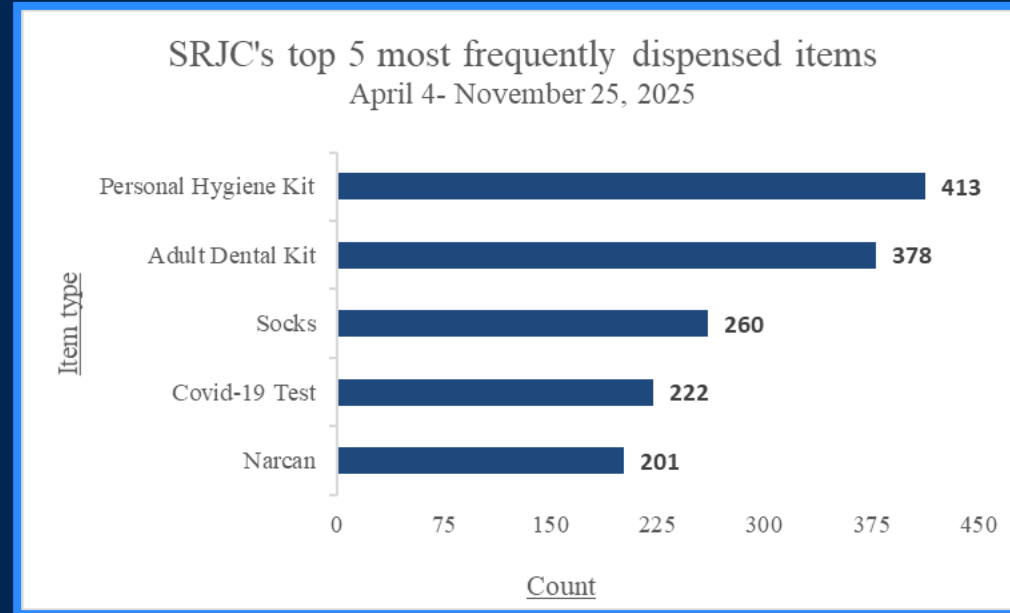


- Female
- Male
- Non-Binary/Unknown

# WELLNESS MACHINES

"Health to Go" Vending Machines, providing:

- Narcan
- Condoms
- Fentanyl Test Strips
- Hygiene & Dental Kits
- Socks
- Feminine Hygiene
- Pregnancy Tests
- COVID -19 Tests
- Cable Gun Locks



*Provided by Sonoma County Public Health Division of the Department of Health Services*



# IT TAKES A VILLAGE...

## **Santa Rosa Campus Basic Needs Staff**

Carri Katonah, Social Worker, Basic Needs Liaison  
Gigi Williams, Support Services Specialist, Basic Needs  
April Holmes, Support Services Specialist, Basic Needs  
Lily Hunnemeder-Bergfelt, Director, Student Resources

## **SRJC Petaluma Basic Needs Staff**

Carmen Quiroz, Social Worker, Basic Needs Liaison  
Bree Clark, Support Services Specialist, Basic Needs  
Amy Granados-Dominguez, Student Success Specialist II  
Michelle Vidaurri, Dir, Student Engagement & Support

## **District Wide Transportation Support Staff**

Hilleary Zarate, Manager, Student Support  
Deborah Ziccone, Manager, Student Support, Petaluma

## **SRJC Roseland Basic Needs Staff**

Alondra Soto-Chavez, Administrative Assistant III  
Yulisa Cruz, STNC Basic Needs Coordinator  
Carmen Quiroz, Social Worker, Basic Needs Liaison  
Bree Clark, Support Services Specialist, Basic Needs  
Hector Delgado, Director, Roseland Center

## **SHS/Mental Health Services Staff**

Daniela Bravo, LCSW, Professional Expert  
Kirsty Viera, PsyD, Professional Expert  
Joseph Hancock, Therapist  
Brijit Aleman, Therapist  
Jeane Erlenborn, Coordinator, Student Health Promotion  
Mathias Garcia, Health Promotion Specialist  
Brian Chetcuti, Health Services Specialist  
Chad DeLaca, Medical Assistant  
Tova Esbit, STNC Substance Use Specialist  
Dr. Rebecca Norwick, Director, Student Health Services

# The Road Ahead...

- **Building a Trauma -Informed, Community of Care**
- Communication of Services
- **Implementing Mental Health Services Recommendations**
- Access to Disaggregated Data
- **Integrating Mental Health & Basic Needs**
- Hiring New Mental Health Director
- **Embedded Supports Across the District**
- Responding to Crisis & Case Review Process
- Use of Technologies for Care

Basic Needs Services: [srjcstudentresourcecenter@santarosa.edu](mailto:srjcstudentresourcecenter@santarosa.edu)

Mental Health Services: [studenthealthservices@santarosa.edu](mailto:studenthealthservices@santarosa.edu)

Transportation Services: [srjcstudentlife@santarosa.edu](mailto:srjcstudentlife@santarosa.edu)

If all else fails: [rethington@santarosa.edu](mailto:rethington@santarosa.edu)

# Q&A

